



B2B Business Document Definition Implementation Guide

Purchase Order (TRADACOMS – ORDHDR)

Version 1.02, 19th October 2010

1 CONTENTS

1	CONTENTS	2
2	INTRODUCTION	3
2.1	DOCUMENT PURPOSE & USE	3
2.2	EDI COMMUNICATION & TRANSMISSION	3
2.3	M&S EDI BUSINESS DOCUMENT DEFINITION	3
2.4	TRADACOMS STANDARD	4
2.5	MESSAGE FLOWS	4
2.6	INTERFACE DEFINITIONS	5
2.7	ASSURING YOUR IMPLEMENTATION	6
2.8	M&S ELECTRONIC TRADING SOLUTION SUPPORT	6
3	MESSAGE DEFINITION	7
3.1	MESSAGE DATA FLOW SUMMARY	7
3.2	MESSAGE USE-CASES	7
3.3	MESSAGE SPECIFICATION REFERENCE GUIDE	8
3.4	MESSAGE DEFINITION GUIDE	8
3.4.1	<i>TRADACOMS Interchange Header</i>	8
3.4.2	<i>TRADACOMS Business Document Definition</i>	9
3.4.3	<i>TRADACOMS Interchange Trailer</i>	16
3.4.4	<i>TRADACOMS Batch Trailer</i>	16
3.5	GUIDANCE NOTES	16
3.5.1	<i>Address Information</i>	16
3.5.2	<i>Item Identifiers</i>	16
4	COMPLIANCE TESTING	18
4.1	TEST CASES	18
4.1.1	<i>PO_ORDHDR_001</i>	18
5	UNDERSTANDING TRADACOMS	19
5.1	WHAT IS TRADACOMS?	19
5.2	TRADACOMS MESSAGE STRUCTURE	19
5.2.1	<i>Segments and Segment Groups</i>	19
5.3	EXAMPLE TRADACOMS MESSAGE	21
5.3.1	<i>Example 1 – Order / Final Order</i>	21
5.3.2	<i>Example 2 – Order Change / Depot Split</i>	21
5.3.3	<i>Example 3 – Customer Order</i>	22
6	VERSION CONTROL	24

2 INTRODUCTION

2.1 Document Purpose & Use

For the implementation of the M&S EDI business documents (messages) we have provided an Implementation Guide to help you through your adoption of the M&S B2B EDI solution.

Provided for you is the Implementation Guide itself detailing the EDI messages and the business context and the circumstances in which they will be passed between yourself and M&S.

Also provided for you is the EDI Business Document Definition; this definition specifies the structure and content of the EDI message that M&S will exchange with you. At M&S we have adopted an Industry compliant EDI data standard to ensure ease of adoption for our Trading Partners. The standard adopted is TRADACOMS and forms the basis of our Business Document Definitions.

In addition we have provided a Testing Compliance Specification, along with example testing files to ensure that your implementation is successful and compliant with what M&S will expect to exchange with you.

Together this information, the Implementation Guide, the Business Document Definition, and the Testing Compliance specification, will provide you with all the information that you need to successfully and smoothly transition onto the M&S B2B EDI solution.

2.2 EDI Communication & Transmission

The M&S B2B EDI solution will enable M&S and you as a Trading Partner of ours to implement a fully automated, end-to-end B2B EDI solution.

This solution is supported for trading partners who have an existing EDI solution, or, who are transitioning to an EDI solution, and can send and receive the EDI messages into their business systems.

We have partnered with GXS to provide a leading-class B2B solution that enables us to seamlessly exchange business documents with you. The following diagram provides a high-level summary to this solution:



2.3 M&S EDI Business Document Definition

M&S have adopted the TRADACOMS standard for its B2B EDI messages; all EDI messages sent and received must be encoded with this data standard as detailed in section [EDI Business Document Definition](#).

Each of the specified Business Documents (or EDI messages) is defined by the Business Document Definitions, and forms the “data contract” between M&S and you our Trading Partner – as defined within this document.

The Business Document Definition provides you with the following information:

- ❖ The TRADACOMS data object to be utilised for each Business Document
- ❖ The TRADACOMS message segments and elements within those to be transmitted as part of any data exchange
- ❖ Implementation rules for each of the segments and elements

- ❖ The business definition of each element to be used
- ❖ The elements that are mandatory and those which are optional i.e. may NOT be passed
- ❖ The format of the data to be passed for each element

As part of your transition process onto the M&S B2B solution, GXS, our partner for this solution will assist you with any queries you may have regarding this implementation guide and Business Document Definition itself, or your implementation of those definitions. .

2.4 TRADACOMS Standard

M&S specify that for EDI communication either the EANCOM or TRADACOM* standard MUST be utilised as the supported data standard and therefore MUST be supported by the Trading Partner (either directly or through 3rd party service).

For all new EDI Trading Partners to M&S, it is expected that TRADACOMS will be utilised. Trading Partners whom have existing EDI with M&S these communications will continue to be supported regardless of the information standard utilised. Where the opportunity provides it these non-supported information standards MUST be migrated to the TRADACOMS standard.

The definition of support is as follows:

- ❖ Any information exchange MUST relate to an TRADACOMS defined data model as listed by current TRADACOMS Syntax
- ❖ Any data model utilised MUST conform to the TRADACOMS definition both schematically i.e. structure and semantically i.e. data format. This includes use of mandatory segments and elements, and adhering to data types and data representations
- ❖ Business level responses MUST be agreed to by M&S and the each Trading Partner and will be specified as part of the MS Message Implementation Guide (this document). Where utilised they MUST align to those specified by the TRADACOMS standard e.g. DLCHDR.

*Note – TRADACOM message standard is available to Foods suppliers ONLY.

2.5 Message Flows

M&S has enabled electronic messages for its “buy” part of its supply chain. As part of the M&S to supplier trading process, as of the date of this Message Implementation Guide, M&S will utilise the following business documents for its Supplier Trading Partner transactions:

- ❖ Purchase Orders & Purchase Order Amendments

The purchase order will represent the formal commitment to buy. The original purchase order may be followed by subsequent updates via the Purchase Order Amendment document.
- ❖ POD (Proof of Delivery)

The proof of delivery will notify the suppliers of the actual quantities received by M&S. Suppliers should submit invoices based on these POD quantities.
- ❖ Invoices

Invoices for received Purchase Orders may be sent using the Invoice business document
- ❖ Invoice Acknowledgement

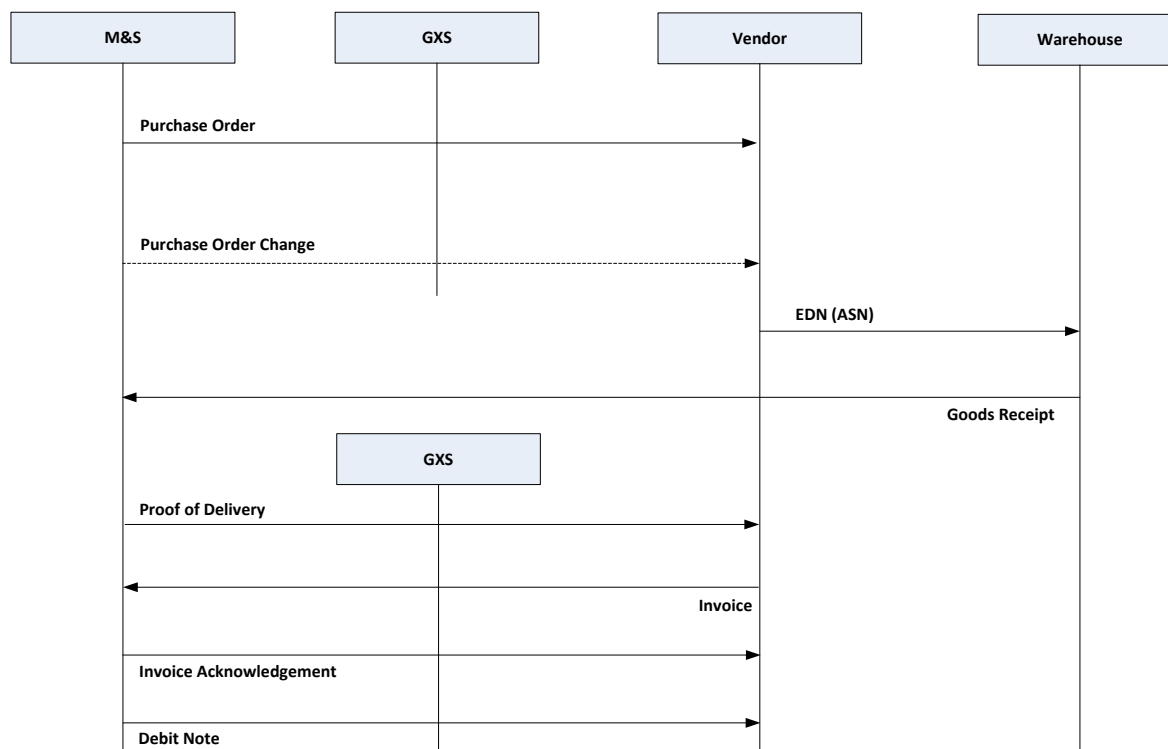
All invoices sent to M&S will be acknowledged. The acknowledgement will provide indication to the M&S processing success or failure. Where the Invoice was not successfully processed it MUST be resubmitted with the required changes.
- ❖ Credit / Debit Notes

Credit / Debit notes will support adjustments to invoiced amounts where there are mis-matches between the Invoice and goods received.

For Food suppliers, all messages will be available in both EANCOM and TRADACOM standard.

In addition to the EDI messages being exchanged above, Food Chilled suppliers have been asked to implement the PAV (pick accuracy verification) system and processes, using RFID. Some Food suppliers may already be using PAV. To support the changes we are making, the PAV messages (delivery note messages) will also need to be updated by Food suppliers.

The following provides reference to the information exchanges detailed:



2.6 Interface Definitions

The following provides reference and explanation to the interface definitions:

Property	Explanation
Communication Direction	Details the direction in which the information will be transmitted: M&S to 3rd Party – M&S will be the sender of the data 3rd Party to M&S – M&S will be the receiver of the data
TRADACOMS Document Name	The business name of the TRADACOMS document to be used as part of the information exchange
TRADACOMS Document Version	The version of the business document to be used
Document Scope	The scope of the data to be passed as part of the information exchange. This will be either Full Record. All data elements associated to the business document will be passed regardless of whether those elements have changed. Changed Elements Only. Only the key elements and those which have changed will be transmitted.
Transmission Frequency	The frequency of when the business documents will be sent and expected to be received Real-time. A document will be sent and processed end-to-end in real-time, or near real-time Daily. Any document sent or received by M&S will be once per day. If

<i>Property</i>	<i>Explanation</i>
	more than 1 document is sent or received during that daily period, all documents will done so at the same time
Data Object Definition Reference	Reference to the data object definition within the Information Exchange Data Definition Document.

2.7 Assuring your implementation

Once you have finalised your implementation of the M&S Business Document Definition, GXS will be on-hand to test both compliance of your implementation, along with ensuring that you can successfully connect to your secure mailbox. GXS will work with you to ensure your on-boarding is a success and resolve and issues you encounter with your implementation.

Once these final checks and testing have been completed you will be ready to start exchanging EDI messages with M&S electronically and soon start realising the benefits of using our electronic trading solution.

2.8 M&S Electronic trading solution Support

During the exchange of business documents between M&S and yourself there may be circumstances where the documents are not successfully transmitted, or the data received is not accepted / compliant to that which is expected by either of our systems.

Where business documents failed to be processed by M&S, we will notify you immediately either through automated acknowledgements detailing what the technical or data problem was, or via our business support team who will contact your designated business representative.

If you encounter any problems receiving business documents from M&S, you can contact our support service.

3 MESSAGE DEFINITION

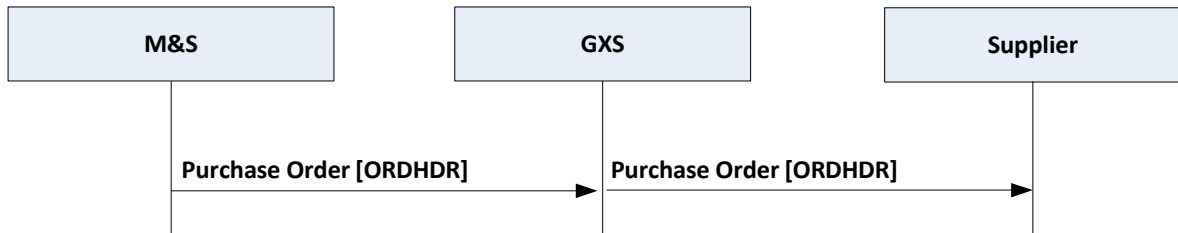
The sections that follow detail the specification of the business document that is the subject of this Message Implementation Guide that M&S will support for electronic information exchange.

3.1 Message Data Flow Summary

The Purchase Order (PO) EDI Business Document will provide all details necessary to enable the supplier to deliver product to the correct delivery location at the time required. As detailed by the definition in this section, the Purchase Order will contain:

- ❖ General information about the buyer and supplier including unique identifiers
- ❖ Purchase Order Number & Date
- ❖ Delivery location
- ❖ Delivery date & time
- ❖ Product identification (UPC)
- ❖ Product description
- ❖ Order quantity

For every PO created the full set of order records will be transmitted. Any amendments to the PO due to an adjustment in M&S requirements will be sent via the Purchase Order Change document.



3.2 Message Use-Cases

The PO message will be used for the following:

- Final Order (Order)

M&S will send you, the trading partner a Purchase Order business document with a document code of "0460" – Final Order. This business document provides detail of what is to be delivered to the specified delivery locations.

- Depot Split (Order Change)

M&S will send you, the trading partner a Purchase Order business document with a document code of "0440" – Depot Split. This business document provides detail of a redistribution of the product ordered in the Final Order. That is the overall order requirement is unchanged, the only change is the quantity to be delivered to some or all of the delivery locations.

For example:

Order type	Delivery location	Quantity ordered
Final Order	A	60
	B	80
	C	40
	D	20
Depot Split	A	60
	B	60
	C	40
	D	40

In both cases the total order requirement is 200 trays but the Depot Split has been used to redistribute the total between delivery locations.

- Customer Order

M&S will send you, the trading partner a Purchase Order business document with a document code of "0430" – Customer Order. This business document provides detail of product ordered to be delivered to store to be picked up by the customer based on a customer order.

3.3 Message Specification Reference Guide

The following table provides summary detail to this business document – trading partner must ensure that the correct version of the TRADACOMS message template is used for its implementation.

Property	Value
Communication Direction	M&S to Trading Partner
TRADACOMS Document Name	Purchase Order
TRADACOMS Document	ORDHDR
TRADACOMS Document Version	8
Document Scope (Full Record/Changed Elements Only)	Full Record
Transmission Frequency	Daily

3.4 Message Definition Guide

3.4.1 TRADACOMS Interchange Header

Every TRADACOMS message will require a TRADACOMS Interchange Header. The interchange MAY contain one or more TRADACOMS messages of the same type.

This segment is used to envelope the interchange, as well as to identify both, the party to whom the interchange is sent and the party who has sent the interchange. The principle of the STX segment is the same as a physical envelope which covers one or more letters or documents, and which details, both the address where delivery is to take place and the address from where the envelope has come. The Interchange Header is defined in the table that follows:

Chg	Segment	Field Ref	Ref No.	Field Length	Description	Min-Max	Example Value	Notes
N	STX				INTERCHANGE HEADER	1-1		
N		STDS			Syntax Rules	1-1		
N			1	4	Syntax identifier	1-1	ANA	
N			2	1	Syntax Number	1-1	1	
N		FROM				1-1		
N			1	13	Mailbox number	1-1	5012068025502	
N			2	35	Name	1-1	Marks and Spencer PLC	
N		UNTO				1-1		
N			1	13	Recipient mailbox / identifier	1-1		Supplier Party Id
N			2	35	Recipient name	1-1		Supplier Party Name
N		TRDT				1-1		
N			1	6	File creation date	1-1	100525	YYMMDD
N			2	6	File creation time	1-1	145209	HHMMSS
N		SNRF				1-1		
N			1	14	Senders reference	1-1		
N		APRF				1-1		
N			1	14	Application reference	1-1	ORDFIN ORDDEP ORDCOS	ORDFIN – Order/ Final Order ORDDEP – Order Change / Depot Split ORDCOS – Order / Customer Order

An example of the Interchange header is provided in section 5.3 Example TRADACOMS Message

3.4.2 TRADACOMS Business Document Definition

The Purchase Order message is implemented using the TRADACOMS ORDHDR data template.

NOTE - Segments / fields marked with an asterisk (*) in column 1 are only applicable to Customer Orders.
The M&S usage of that template is defined below:

Chg	Segment	Field Ref	Ref No.	Field Length	Description	Min-Max	Example Value	Notes
N	MHD				Message header	1-1		
N		MSRF						
N			1	12	Message identifier		1	
N		TYPE						
N			1	6	Message type	1-1	ORDHDR	

Chg	Segment	Field Ref	Ref No.	Field Length	Description	Min-Max	Example Value	Notes
N			2	1	Version number	1-1	6	
N	TYP				Transaction code	1-1		
N		TCDE				1-1		
Y			1	4	Transaction code	1-1	0460 0440 0430 0400	0460 = Order 0440 = Order Change 0430 = Customer Order 0400 = Order Cancellation
N	SDT				Supplier identity	1-1		
N		SIDN				1-1		
N			2	17	Supplier series code	1-1	4952A	
N	CDT				M&S Identity	1-1		
N		CIDN						
N			1	13	M&S Company Code (GLN) for Buying Department / Category	1-1	5012068999993	
N		CNAM				1-1		
N			1	40	Company Name	1-1	Marks and Spencer PLC	
N	FIL				File information	1-1		
N		FLGN				1-1		
N			1	4	File generation number	1-1	652	
N		FLVN				1-1		
N			1	4	File version number	1-1	0001	
N		FLDT				1-1		
N			1	6	File creation date	1-1	100431	YYMMDD format
N	MTR				Message trailer	1-1		
N		NOSG				1-1		
N			1	10	Number of segments	1-1	6	
N	MHD				Message header	1-1		ORDER HEADER
N		MSRF				1-1		
N			1	12	Message identifier	1-1	000000000002	Incremental count of headers within the interchange
N		TYPE				1-1		
N			1	6	Message type	1-1	ORDERS	
N			2	1	Version number	1-1	8	
N	CLO				Location information	1-1		

Chg	Segment	Field Ref	Ref No.	Field Length	Description	Min-Max	Example Value	Notes
N		CLOC				1-1		
N			2	17	Delivery location / Depot code	1-1	BT	Depot or store code
N		CNAM				1-1		
N			1	40	Delivery location / Depot name	1-1	HEMEL DEPOT	Depot or store name
N	ORD				Order / delivery reference	1-N		
N		ORNO				1-1		
N			1	17	M&S Purchase Order number	1-1	2050000178	Purchase Order Number
N			3	6	Purchase Order Creation / Change date	1-1	100522	YYMMDD format
N	DIN				Delivery Instructions	1-1		
N		EDAT						
N			1	6	Out-loading / Earliest delivery date	1-1	100523	YYMMDD format
N		LDAT				1-1		
N			1	6	Depot / Store delivery date	1-1	100523	YYMMDD format
N		DINS				1-1		
N			1	40	Delivery cycle	1-1	MORNING AFTERNOON	
N	DNA				Data narrative - Delivery Information	1-1		
N		SEQA						
N			1	10	1st level sequence number	1-1	1	
N		RTEX			Reference Text	1-1		
N			1	3	Registered application code	1-1	237	
N			2	40	Application text - Destination Country	1-1	GBR	ISO country code
N	*		3	3	Registered application code	0-1	227	
N	*		4	40	Application text - Delivery store code	0-1	077	M&S Delivery store code
N	*		5	3	Registered application code	0-1	274	
N	*		6	40	Application text - Store name	0-1	MARBLE ARCH	M&S Store name
N	*		7	3	Registered application code	0-1	082	
N	*		8	40	Application text - Customer Order number	0-1	30808690	Customer Order number
N	OLD				Order line details	1-N		
N		SEQA				1-1		
N			1	10	1st level sequence number	1-1	1	

Chg	Segment	Field Ref	Ref No.	Field Length	Description	Min-Max	Example Value	Notes
N		SPRO				1-1		
N			1	13	ANA code	1-1	999999999999999	
N		CPRO				1-1		
N			2	30	M&S UPC	1-1	00196932	Internal M&S product code
N		UNOR				1-1		Either field 1 or fields 2 AND 3 must be provided
N			1	15	Units per tray	1-1	12	
N		UNOR				1-1		
N			2	8	Tray value	1-1	00000000	Will always be defaulted to 0000000 - Aligned to existing Order data received
N		UNOR				1-1		
N			3	6	Measure indicator	1-1		Codes list 4. Not populated - Aligned to existing Order data received
N		OQTY				1-1		
N			1	15	Delivery quantity - No. of trays ordered	1-1	50	No. of trays ordered
Y		OUCT				1-1		
Y			1	40	Cost price per Tray	1-1	21.06	Value = 21.06
N		TDES				1-1		
N			1	40	Product description	1-1	SALTED CASHEW	
N	DNB				Data narrative	0-N		
N		SEQA				1-1		
N			1	10	1st level sequence number	1-1		Same as OLD-SEQA-1
N		SEQB				1-1		
N			1	10	2nd level sequence number	1-1	1	
N		RTEX			Reference Text	0-1		
N			1	3	Registered application code	1-1	043	043-Original Order Line No.
N			2	40	Application text - PO Line Item Number	1-1	00010	PO Line Item Number
N			3	3	Registered application	1-1	109	109 - M&S

Chg	Segment	Field Ref	Ref No.	Field Length	Description	Min-Max	Example Value	Notes
					code			Merchandise Department
N			4	40	Application text -Category / Buying Department Code	1-1	F19	M&S Category / Department code
N			5	3	Registered application code	1-1	073	
N			6	40	Application text – Purchase Order currency	0-1	GBP	Currency code of Purchase Order
N	*		7	3	Registered application code	0-1	010	010 -Contract
N	*		8	40	Application text – Customer Number	0-1	1111	Customer number – Customer Order Only
N	DNB				Data narrative	0-N		
N		SEQA			Sequence Number	1-1		
N			2	10	1st level sequence number	1-1		Same as OLD-SEQA-1
N		SEQB			Sequence Number	1-1		
N			2	10	2nd level sequence number	1-1	1	
N		RTEX			Reference Text	0-1		
N			1	3	Registered application code	0-1	600	
Y			2	40	Application text – Measure Indicator	0-1		Measure indicator No value passed
N			3	3	Registered application code	0-1	602	
Y			4	40	Application text – Unit Price	0-1		Unit price (tray value / no of units per tray) No value passed
Y			5	3	Registered application code – Best before date International Orders ONLY	0-1	202	202 – Best Before Date (estimated display until) International Orders ONLY
Y			6	40	Application text - Best before date International Orders ONLY	0-1	101125	Best Before Date YYMMDD. International Orders ONLY
N	*DNB				Data narrative	0-1		
N	*	SEQA			Sequence Number	0-1		
N	*		3	10	1st level sequence number	0-1		Same as

Chg	Segment	Field Ref	Ref No.	Field Length	Description	Min-Max	Example Value	Notes
								OLD-SEQA-1
N	*	SEQB			Sequence Number	0-1		
N	*		3	10	2nd level sequence number	1-1	1	
N	*	RTEX			Reference Text	0-1		
N	*		1	3	Registered application code – Collection Date	0-1	213	213 - Due Date for Pickup
N	*		2	40	Application text – Collection Date	0-1	20101125	Collection date – CCYYMMDD format
N	*		3	3	Registered application code - Celebration Date	0-1	120	120 - Date of Incident
N	*		4	40	Application text – Celebration Date	0-1	20101126	Celebration date CCYYMMDD format
N	*		5	3	Registered application code - Customer name	0-1	107	107 - Name of Person to Whom Goods are to be Delivered
N	*		6	40	Application text - Customer name	0-1	MR J SMITH	Customer name
N	*		7	3	Registered application code	0-1	003	003 -Product Dimensions
N	*		8	40	Application text – Unit weight of item (Grams)	0-1	1000	Unit weight – Expressed in GRAMS
N	*DNB				Data narrative	0-10		This segment MAY repeat multiple times to a Max of 10
N	*	SEQA			Sequence Number	1-1		
N	*		4	10	1st level sequence number	1-1		Same as OLD-SEQA-1
N	*	SEQB			Sequence Number	1-1		
N	*		4	10	2nd level sequence number	1-1	1	
N	*	RTEX			Reference Text	0-1		
N	*		1	3	Registered application code	0-1	004	004 - Extended Product Information
N	*		2	40	Application text – Type of Special Instruction for the order	0-1	PERSONALISED MESSAGE	Product attribute type
N	*		3	3	Registered application code	0-1	141	141 - Description of the Product
N	*		4	40	Application text – Special Instruction Information	0-1	HAPPY BIRTHDAY DAD	Attribute description

Chg	Segment	Field Ref	Ref No.	Field Length	Description	Min-Max	Example Value	Notes
N	OTR				Order totals	1-1		
N		LORD				1-1		
N			1	8	Number of orders	1-1		Count of OLD segments
N	MTR				Message trailer	1-1		
N		NOSG			Number of Segments	1-1		
N			1	10	Number of segments	1-1		

An example of the Interchange detail is provided in section 5.3 Example TRADACOMS Message

3.4.3 TRADACOMS Interchange Trailer

Every TRADACOMS message will require an TRADACOMS Interchange Trailer. The Interchange Trailer is defined in the table that follows:

Chg	Segment	Field Ref	Field No.	Field Length	Description	Min-Max	Example Value	Notes
N	MHD				MESSAGE HEADER	1-1		Order Trailer
N		MSRF			Message Reference	1-1		
N			1	12	Message identifier	1-1	1	
N		TYPE			Type of Message	1-1		
N			1	6	Message type	1-1	ORDTRL	
N			2	1	Version number	1-1	4	
N	OFT				File total	1-1		
N		FTCO				1-1		
N			1	10	Total orders	1-1	1	File total of orders
N	MTR				Message trailer	1-1		
N		NOSG			Number of Segments	1-1		
N			1	10	Number of segments	1-1		

An example of the Interchange trailer is provided in section 5.3 Example TRADACOMS Message.

3.4.4 TRADACOMS Batch Trailer

Each batch transmitted requires a TRADACOMS batch trailer. The batch Trailer is defined in the table that follows:

Chg	Segment	Field Ref	Field No.	Field Length	Description	Min-Max	Example Value	Notes
N	END				End of transmission	1-1		
N		NMST				1-1		
N			1	5	Count of messages	1-1	1	Number of messages in the batch

An example of the Interchange trailer is provided in section 5.3 Example TRADACOMS Message

3.5 Guidance Notes

3.5.1 Address Information

M&S will send all the relevant addresses on the Purchase Order where possible.

3.5.2 Item Identifiers

M&S will distribute unique product codes (UPC) for each of its items. In the short-term these will be 8 digit codes, however will transition to fully qualified 14 digit GTIN compliant with GS1 product identifiers. The



target 14 digit GTIN will contain the 8 digit M&S UPC code for ease of future transition. Your implementation must be able to manage the future requirement.

4 COMPLIANCE TESTING

4.1 Test Cases

The following test cases are required for the testing of this EDI Business Document.

4.1.1 PO_ORDHDR_001

This test condition is to ensure the implementation compliance for the Purchase Order functional use case. Your implementation must be able to process the example test file. Note: at the time of creation there maybe varying levels of information available on the Purchase Order; all mandatory fields will be present.

<i>Property</i>	<i>Definition / Reference</i>
Test Case Reference	PO_ORDHDR_001
Business Context	Create Purchase Order
Functional Requirement	The creation of a Purchase Order for a Food Supplier
Applies To	Ambient Cold Chain Wine Frozen
Test Case Definition	<p>Purchase Order sent to GXS and Vendor mailbox determined by Vendor No.</p> <p>Purchase Order forwarded to Vendor and created within Vendor business system.</p> <p>Purchase Order contains the following information:</p> <ul style="list-style-type: none"> - Vendor Number, Name & Address - Buyer Name & Address - Vendor Factory Number - Purchase Order Number - Purchase Order Date - Dept No. & Name - Quantity Ordered - Items No. & Description - UPC & Measurement Unit Code
Outcome	<p>Purchase Order sent to Vendors via GXS.</p> <p>Technical acknowledgement is received from the Vendor acknowledging successful delivery of the message to the Vendor.</p>
Test File Reference	POD_DLCHDR_001.edi

5 UNDERSTANDING TRADACOMS

5.1 WHAT IS TRADACOMS?

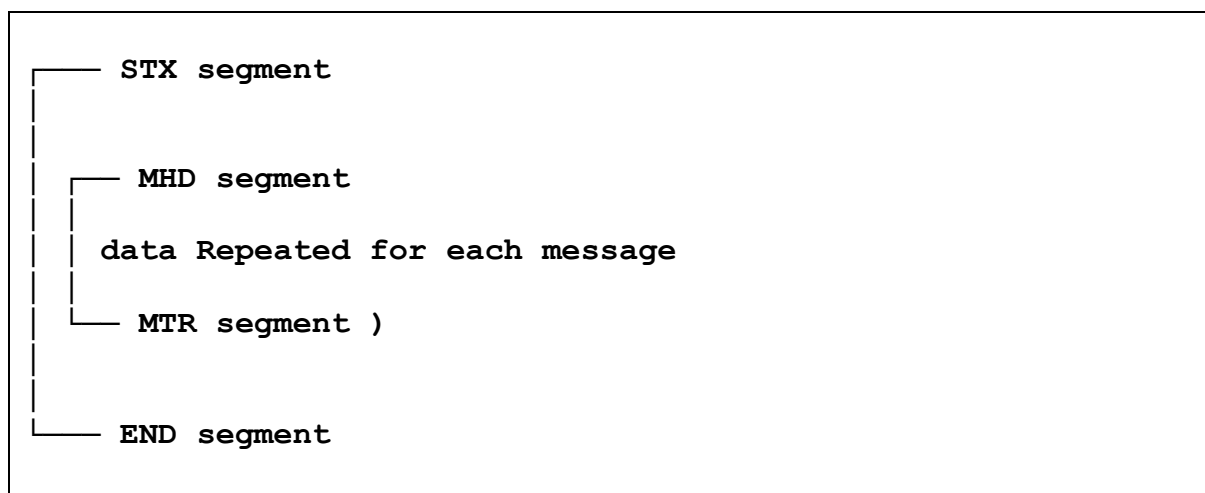
Tradacoms is an early standard for EDI (Electronic Data Interchange)) primarily used in the UK retail sector. It was introduced in 1982 as an implementation of the **UN/GTDI** syntax, one of the precursors of EDIFACT, and was maintained and extended by the UK Article Numbering Association (now called GS1 UK).

5.2 TRADACOMS Message Structure

Each TRADACOMS message will have the following structure:

- ❖ Interchange / Envelope Header (STX)
- ❖ Message Header Section (MHD)
- ❖ Detail Section (Any)
- ❖ Interchange / Envelope Trailer (MTR)

The structure is shown in the figure that follows:



Each data segment has a specific place within the sequence of segments in the message. They may occur in any of the following three sections of the message:

- ❖ Heading section - A segment occurring in this section relates to the entire message
- ❖ Detail section - A segment occurring in this section relates to the detail information only and will contain the business data i.e. contract, Purchase Order etc.
- ❖ Trailer section - Only segments containing totals or control information may occur in the trailer section, e.g. invoice total amount, number of lines in a Purchase Order.

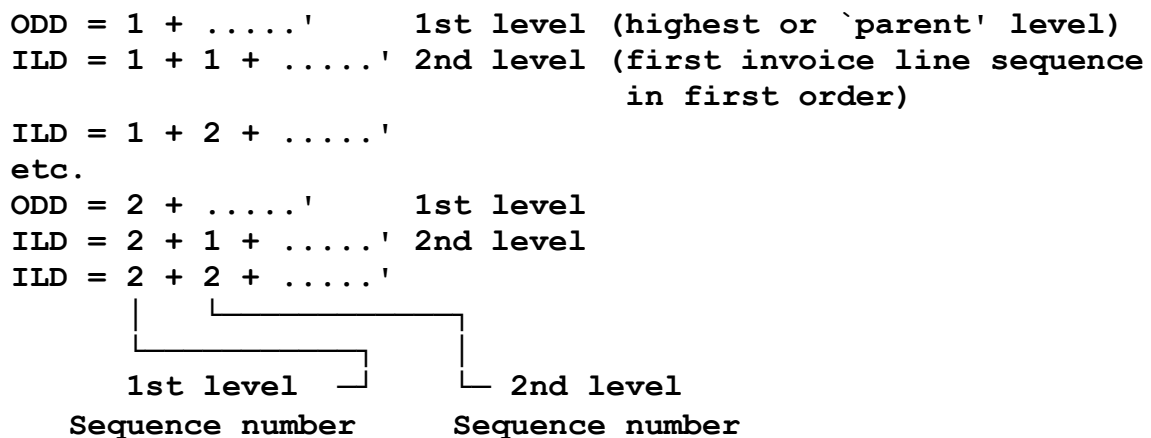
5.2.1 Segments and Segment Groups

The same segment type may occur in more than one of the message sections, for example in the header and in the detail section, and/or more than once in the same section.

Some segments may be repeated a certain number of times at their specific location in the message. The status, Mandatory or Conditional, and the maximum number of repetitions of segment types are indicated in the message structure.

Within a message, specific groups of functionally related segments may be repeated; these groups are referred to as "segment groups". The maximum number of repetitions of a particular segment group at a specific location is included in the message definition.

A segment group may be nested within other segment groups, provided that the inner segment group terminates before any outer segment group terminates. The following taken from the TRADACOMS standard itself provides reference to the message structure with segments and segment groups.



A segment consists of the following:

- ❖ A segment tag: identifies the segment type
- ❖ Data element separators
- ❖ Simple and/or composite data elements,
- ❖ A segment terminator

Data elements can be defined as having a fixed or variable length.

A composite data element contains two or more component data elements.

A component data element is a simple data element used in a composite data element.

A data element can be qualified by another data element, the value of which is expressed as a code that gives specific meaning to the data. The data value of a qualifier is a code taken from an agreed set of code values.

5.3 Example TRADACOMS Message

5.3.1 Example 1 – Order / Final Order

STX=ANA:1+SENDERID1+RECEIVERID1+100630:205229+FO0001++ORDFIN'
 MHD=1+ORDHDR:6'
 TYP=0460'
 SDT=:4408A'
 CDT=5012068025502+MARKS AND SPENCER PLC'
 FIL=1+1+100630'
 MTR=6'
 MHD=2+ORDERS:8'
 CLO=:6444+KEW'
 ORD=::100630'
 DIN=100630+100701++MORNING'
 DNA=1++237:GBR'
 OLD=1+999999999999++:00196932+12:2748:100+200+++EW SPANISH X VRG OLV OIL'
 DNB=1+1++108::109:F19A:073:GBP'
 DNB=1+2++600:PER KILOGRAM:602'
 OLD=2+999999999999++:00498180+12:3228:100+200+++SPECIALITY TUSCAN O OIL'
 DNB=2+1++108::109:F19A:073:GBP'
 DNB=2+2++600:100 GRAMS:602'
 OTR=2'
 MTR=13'
 MHD=3+ORDTLR:4'
 OFT=2'
 MTR=3'
 END=3'

5.3.2 Example 2 – Order Change / Depot Split

STX=ANA:1+5012068025502:MARKS & SPENCER
 PLC+GISTTEST:HONEYTOP+100630:162608+100518+052736+ORDDEP'
 MHD=1+ORDHDR:6'
 TYP=0440'
 SDT=:1501B'
 CDT=5012068999993+MARKS AND SPENCER PLC'
 FIL=1+1+100630'
 MTR=6'
 MHD=2+ORDERS:8'
 CLO=:BQ+BRISTOL FOOD DEPOT (BOC)'
 ORD=2050000178::100630'

DIN=+100705++MORNING'
 DNA=1++237:GBR'
 OLD=1+9999999999999999++E 001+ 12:118900:GBP+10++++ *LEMON DRIZZL'
 DNB=1+1++043:00010:109:F09'
 DNB=1+2++:::003:1.2'
 DNB=1+3++:::600:001:602:11.89'
 OLD=2+9999999999999999++: 007+ 8:142600:GBP+12++++ WALNUT CAKE'
 DNB=2+4++043:00020:109:F09'
 DNB=2+5++:::003:14.4'
 DNB=2+6++:::600:001:602:11.89'
 OLD=3+9999999999999999++:K 001+ 12:439900:GBP+37++++ ICED SPONGE C'
 DNB=3+7++043:00030:109:F09'
 DNB=3+8++:::003:4.44'
 DNB=3+9++:::600:001:602:11.89'
 OTR=3'
 MTR=19'
 MHD=3+ORDTLR:4'
 OFT=1'
 MTR=3'
 END=3'

5.3.3 Example 3 – Customer Order

STX=ANA:1+SENDERID1+RECEIVERID1+100701:082004+00000000000381++ORDCOS'
 MHD=1+ORDHDR:6'
 TYP=0430'
 SDT=:1501A'
 CDT=5012068999993+MARKS AND SPENCER PLC'
 FIL=1+1+100701'
 MTR=6'
 MHD=2+ORDERS:8'
 CLO=:BT+HEMEL HEMPSTEAD FOOD DEPOT'
 ORD=2060000013:::100630'
 DIN=100630+100701++MORNING'
 DNA=1++237:GBR:::082:123456'
 OLD=1+9999999999999999++:00663472+ 1:30000:GBP+1++++FTOCHY BL IV FT (PERSONALISED ????)'
 DNB=1+1++043:00010:109:F09:::010:654321'
 DNB=1+2++213:20100701:120:20100702:107:MR TEST PERSON'
 DNB=1+3++004:MANY MORE HAPPY RETURNS:141:ARUNIKA WELCO?:ME TO MARKS AND SPENCER,'
 DNB=1+4++:::600:001:602:30'
 OTR=1'

MTR=12'

MHD=3+ORDTLR:4'

OFT=1'

MTR=3'

END=3'

6 VERSION CONTROL

The following versions of the document have been produced:

<i>Version</i>	<i>Status</i>	<i>Issue Date</i>	<i>Author</i>	<i>Comments</i>
1.00	Issued	11.06.2010	M&S	Issued version.
1.01	Issued	09.07.2010	M&S	Minor revisions Addition of message examples
1.02	Issued	19.10.2010	M&S	Addition of Cancellation Code = 400 New field OLD-OUCT (Tray cost price) Update to Unit Cost Value – No Value to be passed New field RTEX – Best Before Date (International Orders only)